

NEW BEGINNINGS AT



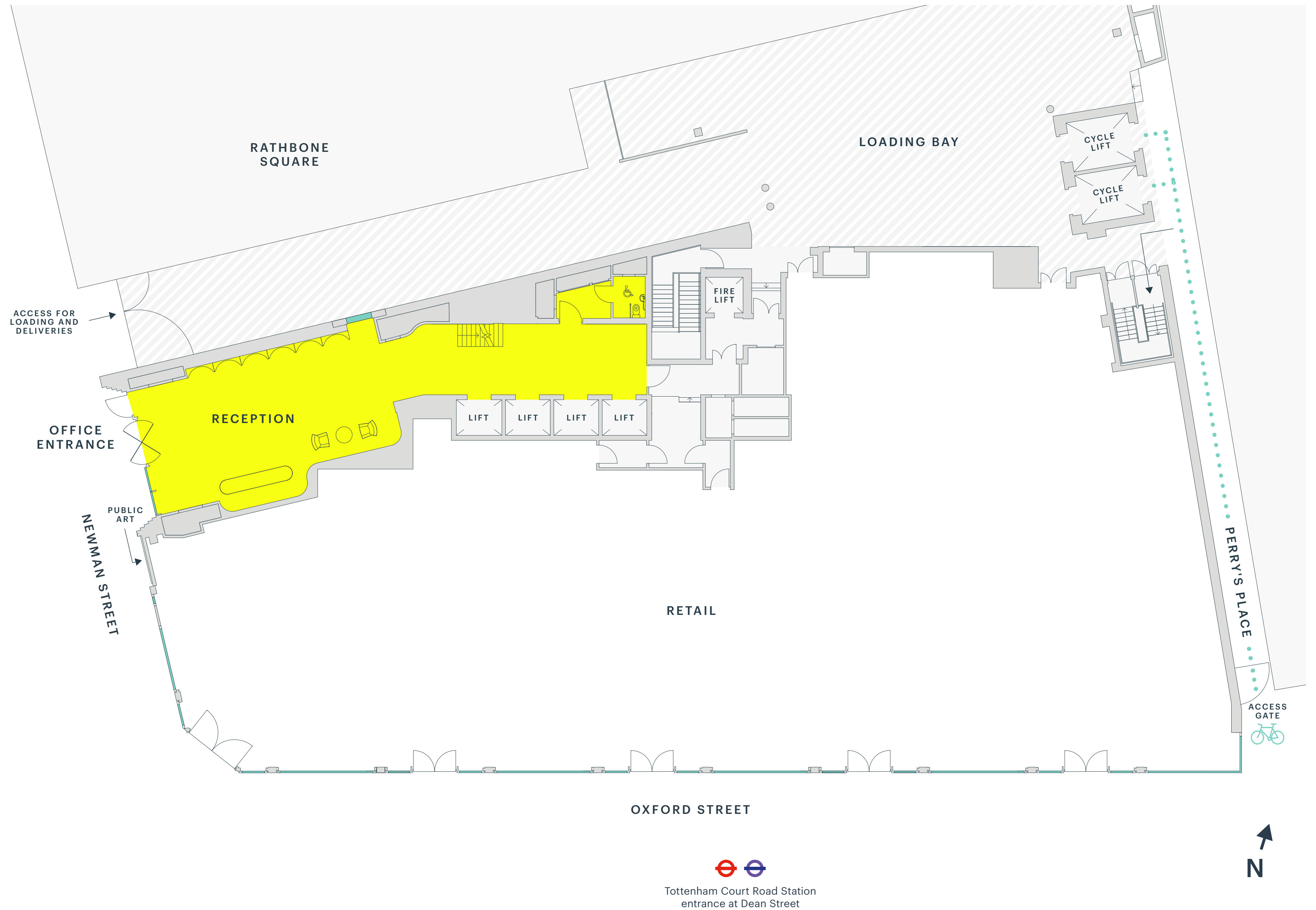
One Newman St.

FITZROVIA W1

BRAND NEW OFFICE SPACE

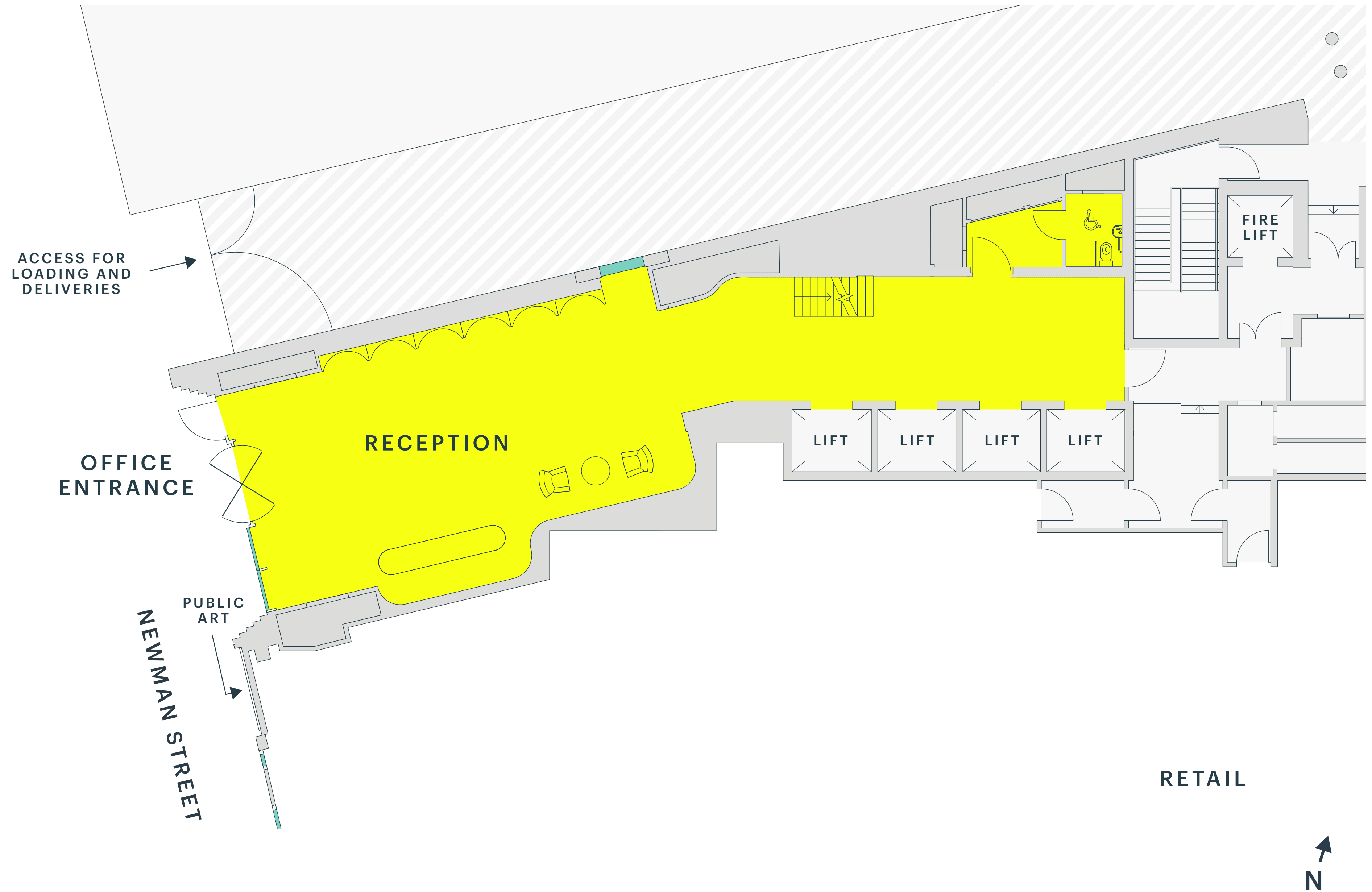
Ground Floor

Reception
1,037 sq ft



Ground Floor

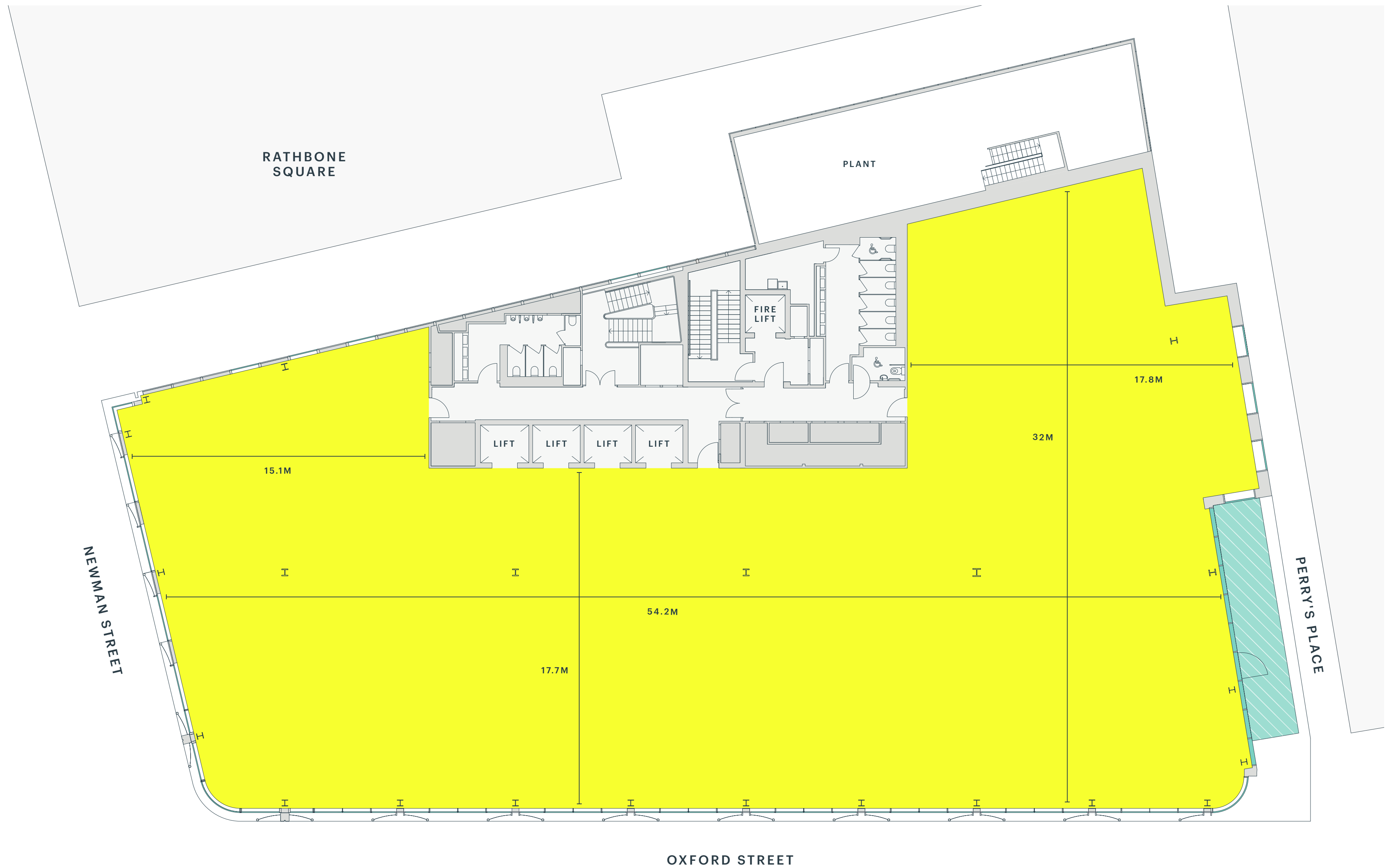
Reception
1,037 sq ft



2nd Floor

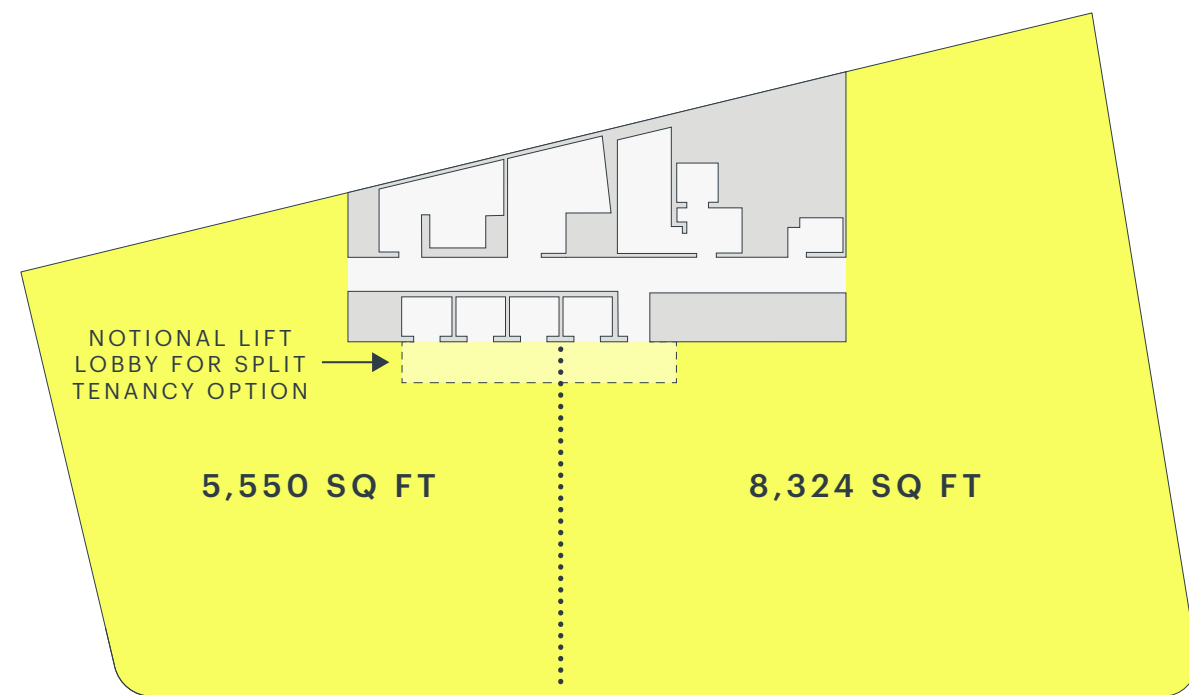
13,972 sq ft

322 sq ft terrace



3rd Floor

13,733 sq ft

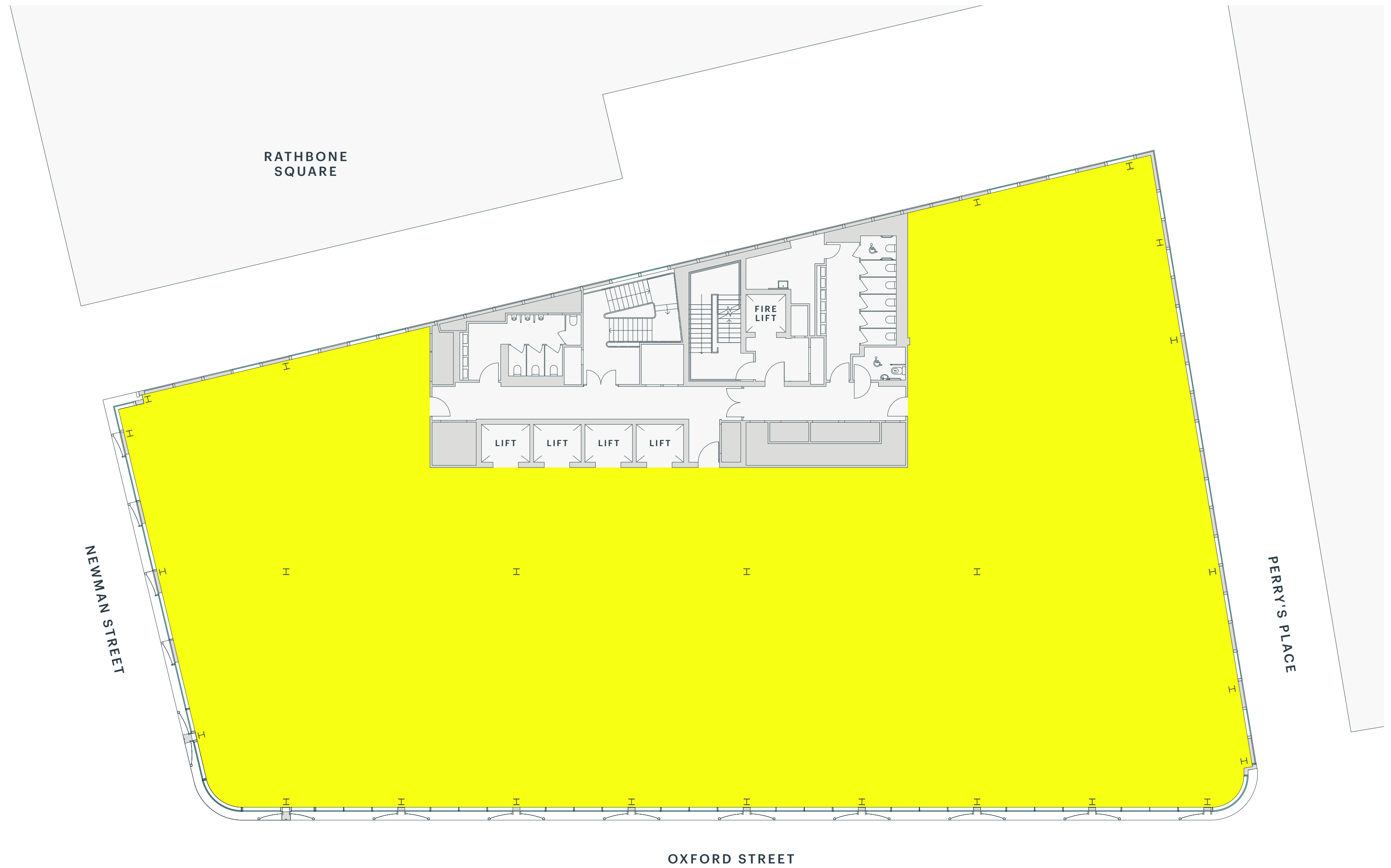


Split tenancy option
40:60% base offering



4th Floor

13,778 sq ft



Basement

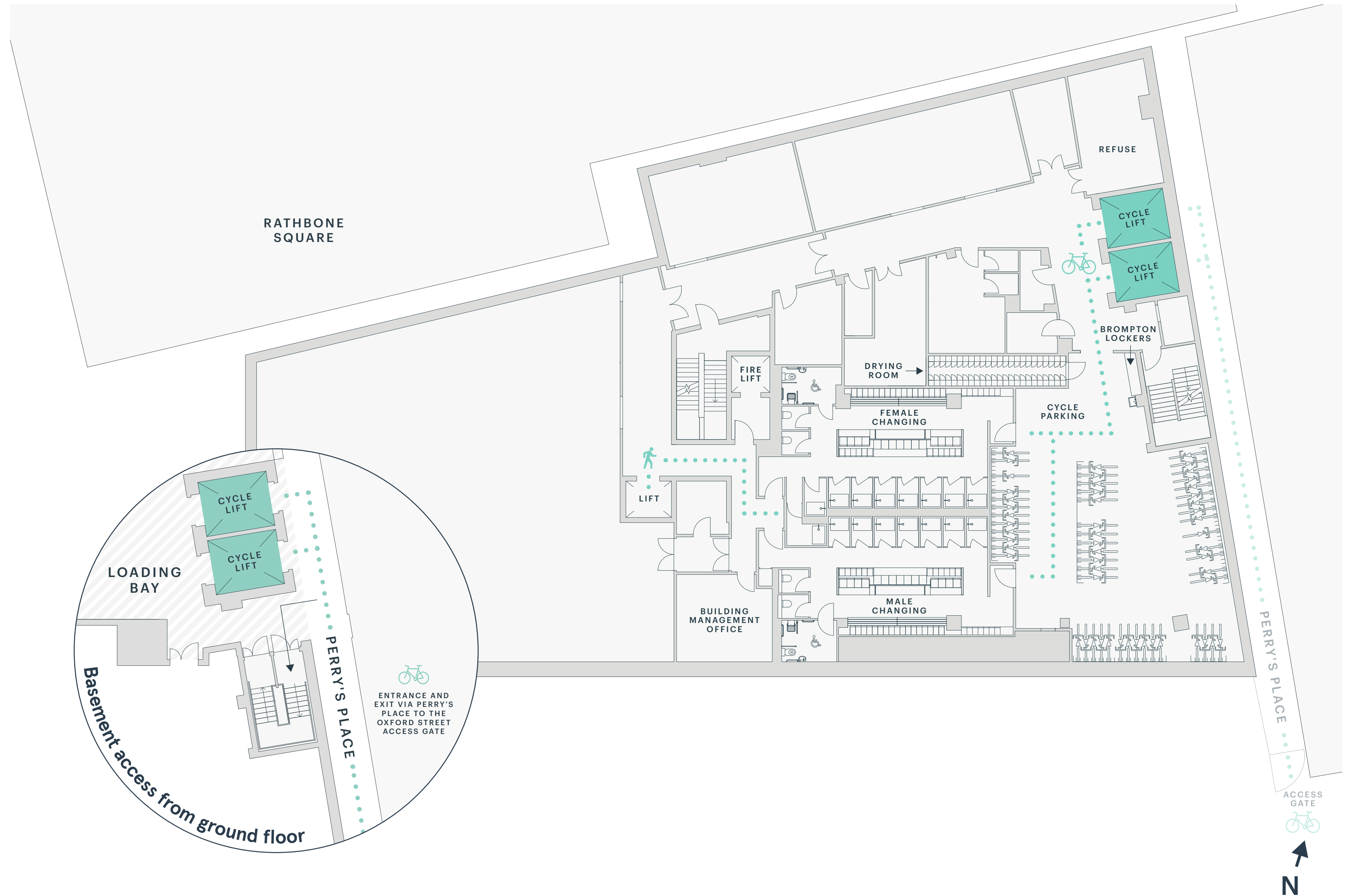
Cycle Amenity

290 lockers
(136 female, 136 male, 18 mixed)

16 showers
(9 female, 7 male)

187 cycle spaces

Space equipped with cycle repair facilities, towels, Wi-Fi, water fountains and some lockers with charging points



Roof Terrace

3,135 sq ft

